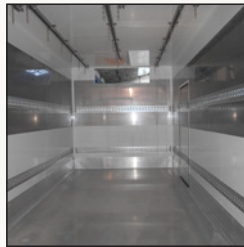


MEAT HANGING

ISOTHERM / REFRIGERATED

SPECIAL RANGE - Up to 26.000 Kg MAM



General information:

PANELS

Description	Thickness
Lateral	65/75 mm
Roof	105/125 mm
Frontal	75/85 mm
Rear	73/85 mm
Floor	105/125/145 mm

- All MAMs from 3.500 Kg up to 26.000 Kg.
- Transport of hanging meat.
- Structure strongly reinforced to bear heavy loads.
- Aluminium inner profiles.
- All range of rails for meat hanging.
- Aluminium skirting board 8 mm thickness for high resistance and waterproof.

Optional

- LED interior fitting roof lights integrated at roof wth movement sensor.
- Meat hanging aluminium rails , all range (Italian, tubular, Bi rail system etc.).
- Trunking for second evaporator.
- Pull down step protection (Stainless Steel or Galvanised).
- Cargo rail (inox or galvanised).
- Fixed or movable division.
- Side door (single or double).
- Aluminium finishing floor.
- Waterdrain with valve.
- Elongation of rear frame for fork lifts entrance.
- Aluminium or steel chassis subframe.
- Aluminium or stainless inox protection strips for rear doors.
- Integrated hinges at rear frame.
- 1, 3 or 4 flaps rear door.
- Ventilation windows.
- Tail lift bottom runner on the rear frame.

Accessories

- Rear PVC curtains fitted.
- Hooks for meat, all range.
- Lift platform.
- Refrigeration equipment.
- Tool boxes.
- Plastic extinguisher boxes.
- Pull down rear step.
- Aluminium anti cycling profiles.
- Thermo plastic mudguards and flaps.
- Spoilers.
- Thermographs.